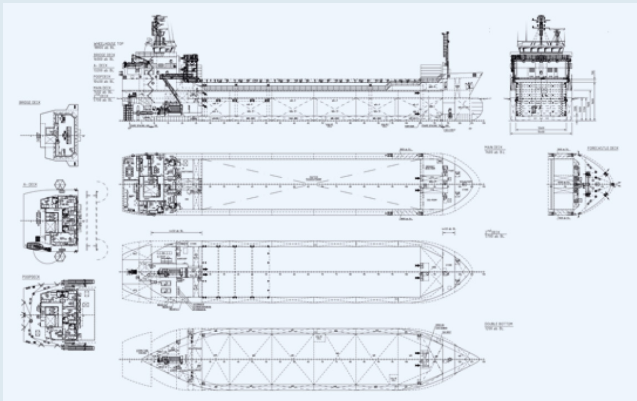


Triple S

INFORMATION

Type	Boxed-shaped Singledecker
Year of Built	2013
Flag	Portugal
IMO No.	9662382
Call Sign	CQ2067



PARTICULARS

Summer / Winter DWAT	5.201 mt / 5.036 mt
Summer / Winter draft	abt. 6,13 m / abt. 6,00 m
LOA	89,97 m
Beam	15,40 m
Moulded depth	abt. 7,61 m
WLTHC	abt. 6,60 m in ballast
Air draft	abt. 22,30 m in ballast
GT / NT	3.845 GT / 1.590 NT
Grain capacity / Bale capacity	198.216 cbft / 198.216 cbft
Holds / Hatches	1 / 1
Hatch covers	Pontoon type hatchcovers moved by 1 travelling gantry
Hatch dimensions	54,60 m x 12,60 m
Tanktop / Deck strenght	15 mt/m ² / 1,75 mt/m ²
Cargo gear	none
Bulkheads	2 movable bulkheads (can be put as part tweendeck at after end of hold)
Grainfitted	yes
Cement holes	yes
Bowthruster	yes
IMO fitted	yes
ITF fitted	yes

All details believed to be correct, however, without gurantee.